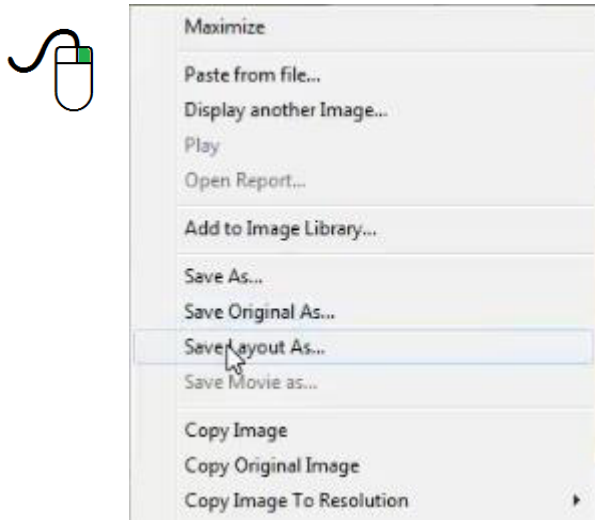
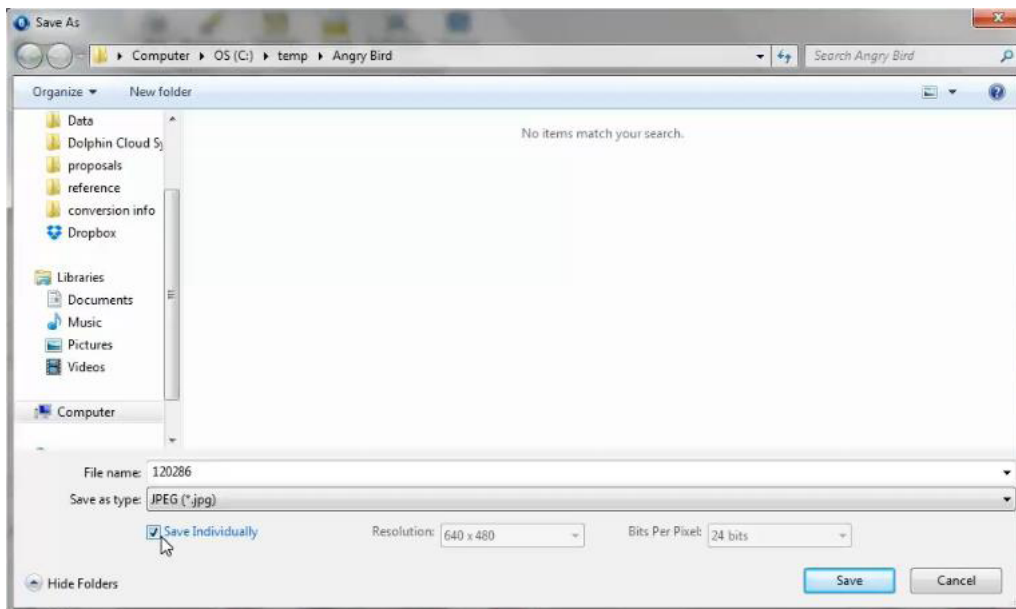


How to Export Photos from Dolphin Imaging

1. Select the appropriate patient and open Dolphin Imaging
2. Make sure that the **Layout** is set to the **Composite (10)** Layout
3. Place the mouse over any image and click the **RIGHT** mouse button
4. Click on "Save Layout As..."



5. On the **Save As** screen, **BE SURE** that the **Save Individually** option is checked



6. Navigate to a folder where you want to store the Case File information and Name the File with the Patient's First Initial and Last Name
7. Click **Save** to export the images
8. You will need to **Create a Compressed (Zipped)** Folder for the Exported Images before uploading them